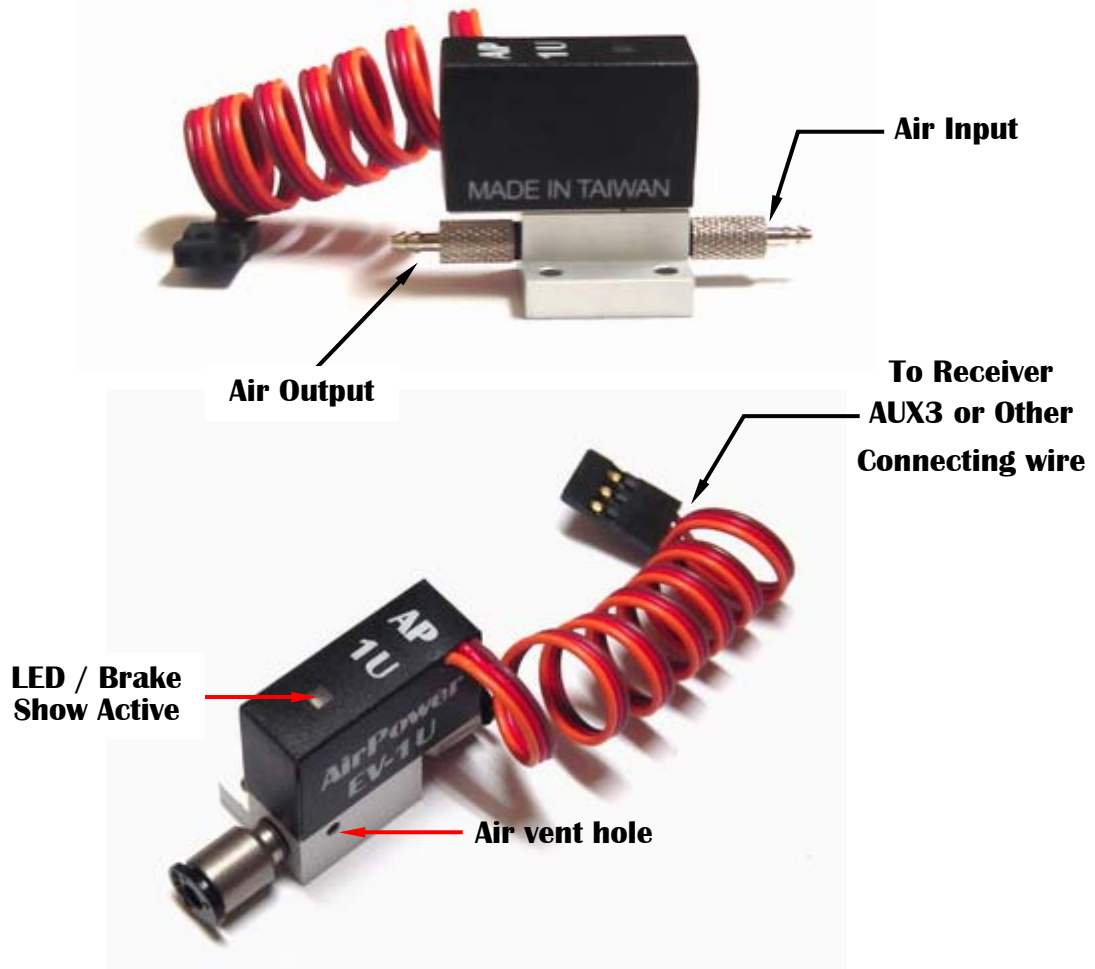


New Design !!



Completely digital brake control. Can be used as an on/off or proportional brake valve. Also great for Air-Up / Sping down landing gear and speed brakes.

This new " Single Action Proportional Brake Valve " has following qualities :

- ◆ Simple way varying. Can establish via three ways (Servo Tester / Transmitter / EV-PC Program Card)
- ◆ Clear LED status display.
- ◆ Light weight and compact size.

Technical data :

Voltage range : 3.7~6.0 V

Consume current : 110 mA - Max.

Length : 28.28mm

Width : 16.02mm

Height : 28.20mm

Weight : 25g.

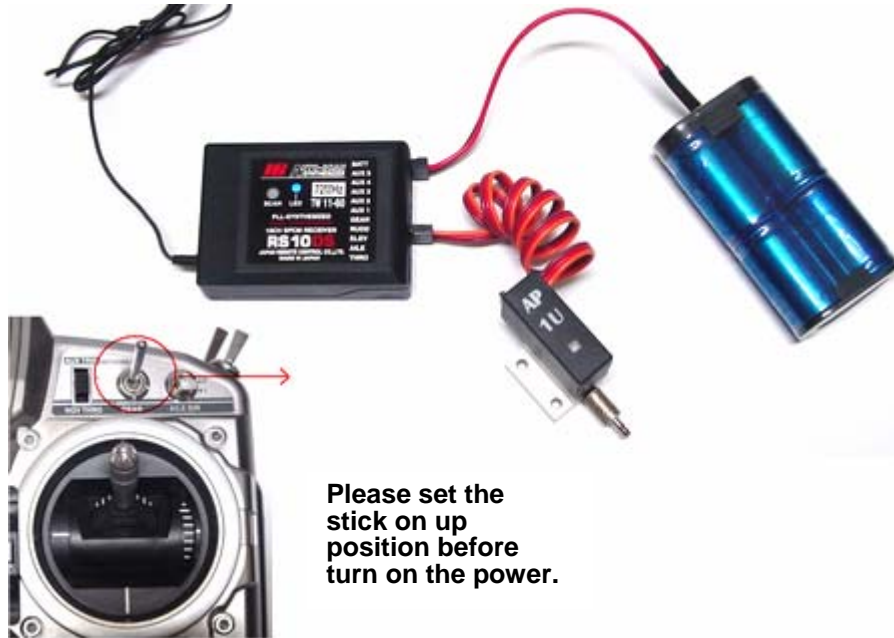
Connector : EV-1U-A For Tubing Connect

EV-1U-B For Pisco Fast Connect



SETUP & OPERATION

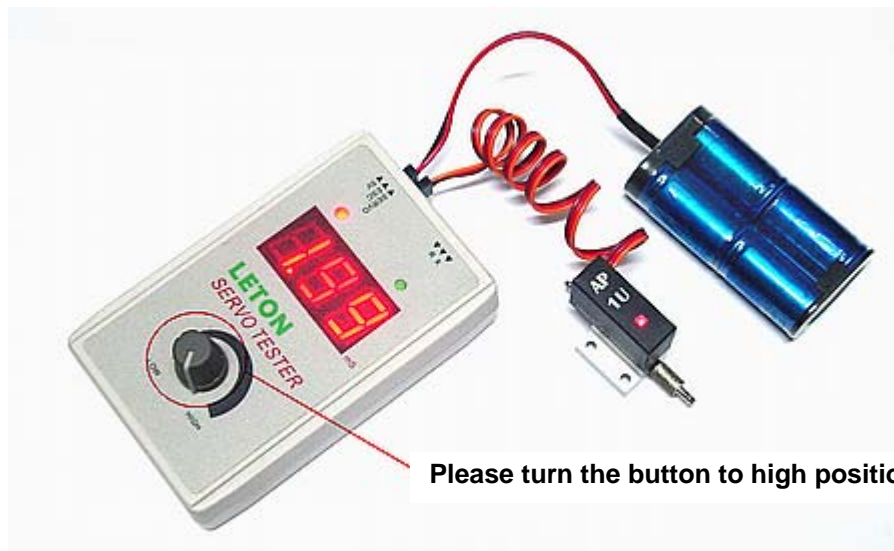
- ◆ LED status display : LED Flash x 1 for on/off brake valve .
LED Flash x 2 for proportional brake valve .



Please set the stick on up position before turn on the power.

Method 1 / Transmitter

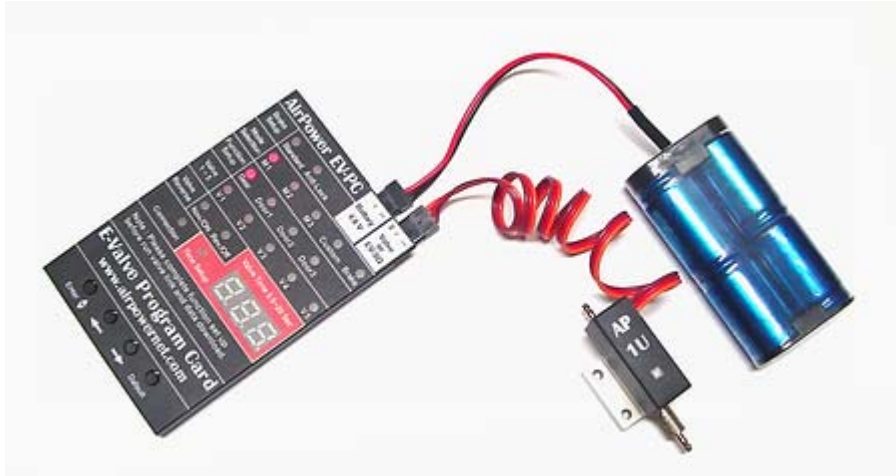
Please set the stick on up position before turn on the power. Place stick up and down 3 times within 2 second. Check LED status, if LED flash changed, it indicate function set up complete.



Please turn the button to high position.

Method 2 / Servo Tester

Please turn the button to high position before turn on the power. Turn the button from high to low and then turn back 3 times within 2 second.



Method 3 / EV-PC Program Card

Note : Please complete function set up before run valve link and data download.

Step 1 Please first choose the card way M1 or M2

Step 2 Choose Function Setup / Gear

Step 3 Choose Valve Reverse Nov./ON or Rev./Off

Note : Nov./ON for on/off brake valve
Rev./Off for proportional brake valve

Step 4 Link EV-1U Single Action Brake Valve

Step 5 Check LED status, if LED flash changed, it indicate function set up complete