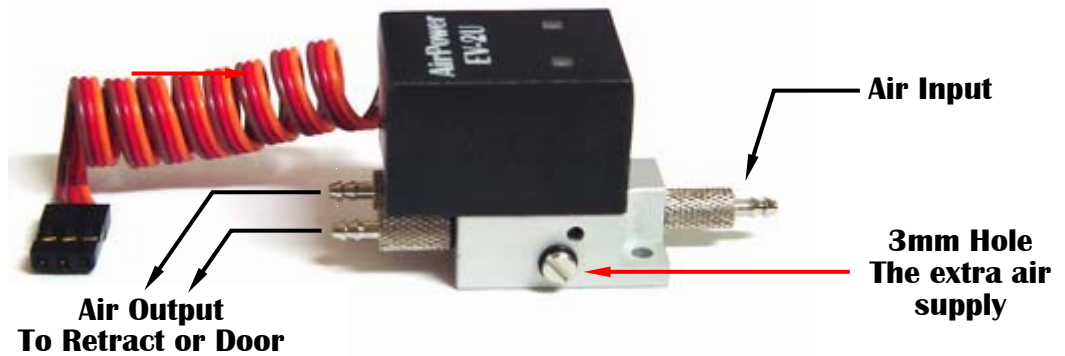
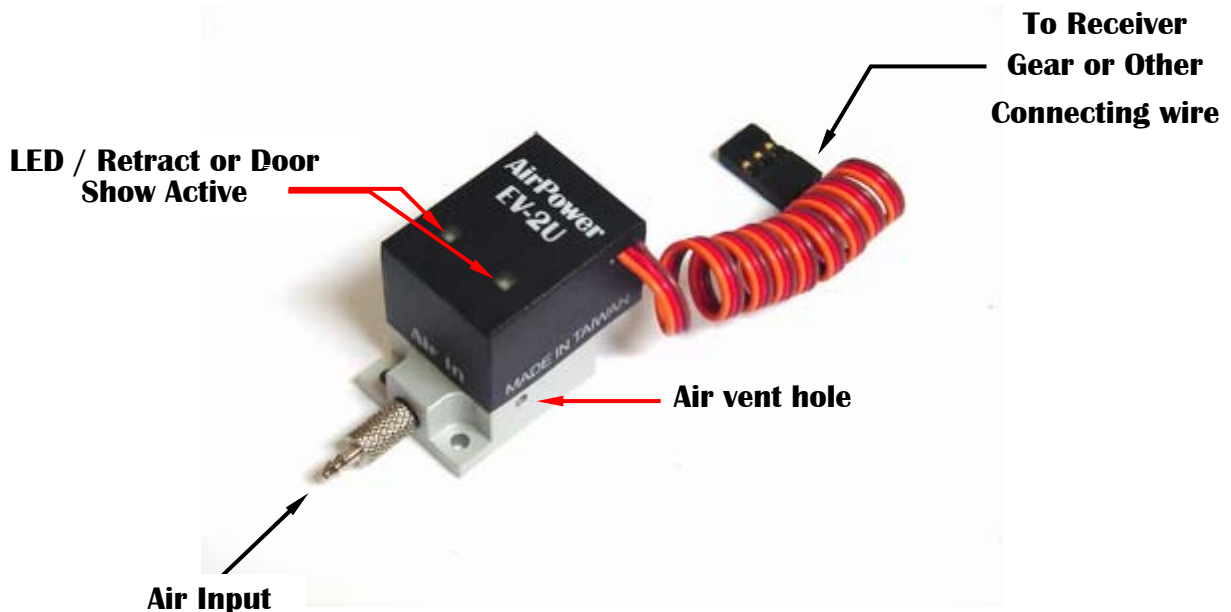


**New Design !!**



This Airpower new electronic dual action valve offers electronic control of retracts or gear doors in one convenient electronic valve. Supplied with barbed airline fittings & Pisco Fast Connect, two kinds of choices.

This new " Dual Action Retract / Gear Door Valve " has following qualities :

- ◆ Simple programming. Can establish via three ways (Servo Tester / Transmitter / EV-PC Program Card)
- ◆ Clear LED status display.
- ◆ Light weight and compact size.

Technical data :

Voltage range : 3.7~6.0 V

Consume current : 110 mA - Max.

Length : 28.28mm

Width : 21.31mm

Height : 27.42mm

Weight : 36g.

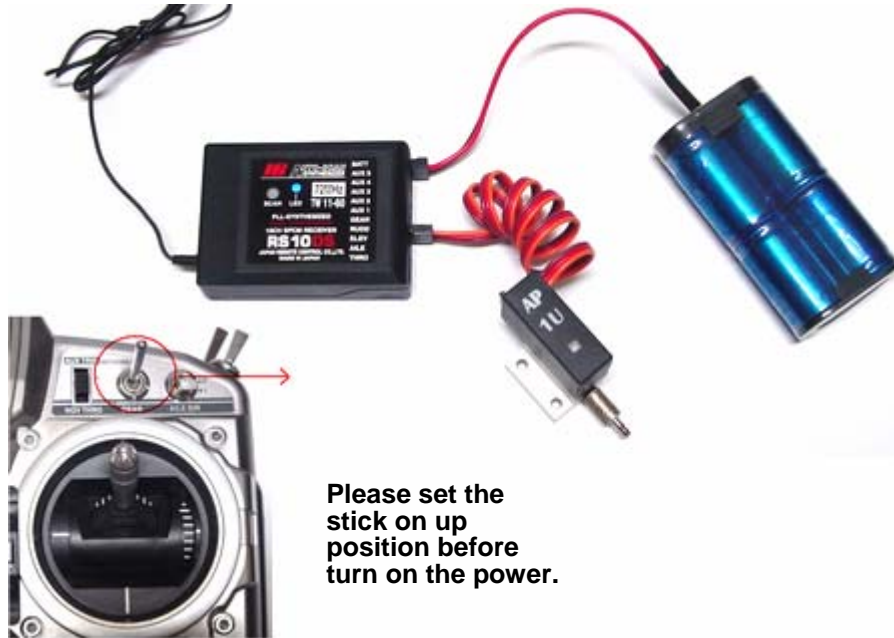
Connector : EV-2U-A For Barbed Tubing Connect

EV-2U-B For Pisco Fast Connect



## SETUP & OPERATION

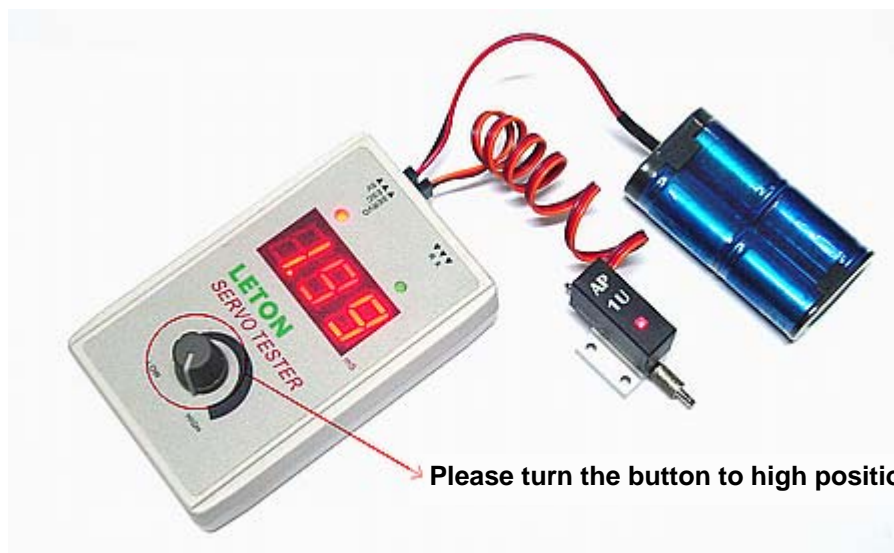
- ◆ LED status display : LED Flash x 1 for Right valve.  
LED Flash x 2 for Left valve.



Please set the stick on up position before turn on the power.

### Method 1 / Transmitter

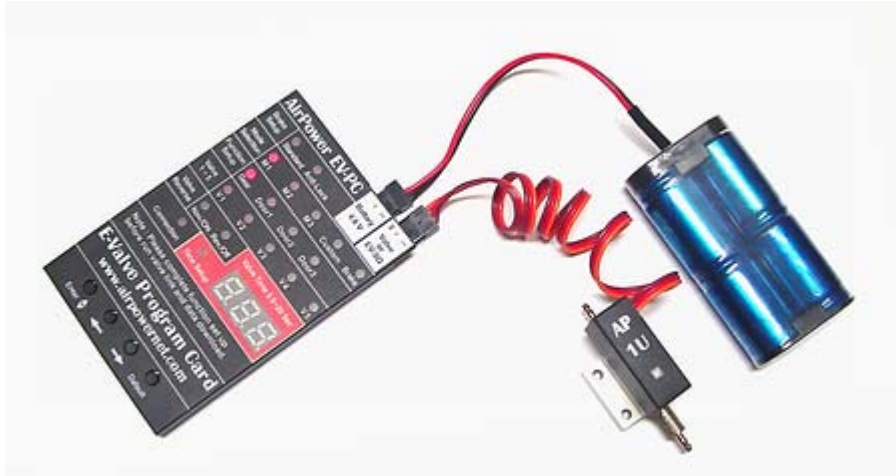
Please set the stick on up position before turn on the power. Place stick up and down 3 times within 2 second. Check LED status, if LED flash changed, it indicate function set up complete.



Please turn the button to high position.

### Method 2 / Servo Tester

Please turn the button to high position before turn on the power. Turn the button from high to low and then turn back 3 times within 2 second.



**Method 3 / EV-PC Program Card**

**Note : Please complete function set up before run valve link and data download.**

**Step 1** Please first choose the card way M1 or M2

**Step 2** Choose Function Setup / Gear

**Step 3** Choose Valve Reverse Nov./ON or Rev./Off

**Note : Nov./ON for Right valve  
Rev./Off for Left valve**

**Step 4** Link EV-2U Dual Action Retract / Gear Door Valve

**Step 5** Check LED status, if LED flash changed, it indicate function set up complete